

## South Lewis “Tip of the Month”

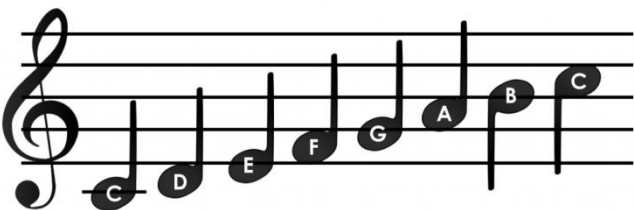
# POWERFUL Instruction



Select a visual of something you want to make sure your students know. It might be something you’re currently teaching them or something you’d like to review. Give them 3 minutes to go around the room and find a partner to sign up by each “part” on the picture. When it’s time to do partner activities, you could say, “Please find your \_\_\_\_\_ partner.” I guarantee that the 3 minutes of time spent on having students find the partners, along with the occasional use of the diagram to match up partners, will ensure that students learn this image. It’s also a fun way to get different students collaborating with each other during class. Each month you can select a new image to use for your partner activities. (Google search for “Images” on a current topic you’re teaching to get ideas of visuals you could use.)

## The C Scale

www.thebridfeedinc.com

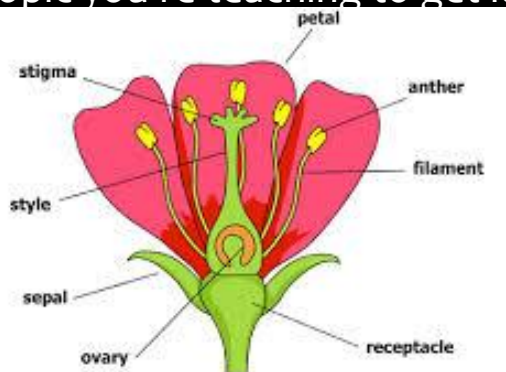


## Note Buddies



# December '15

## Collaboration & Visual Memory



## Flower Friends

## Microscope Pals

